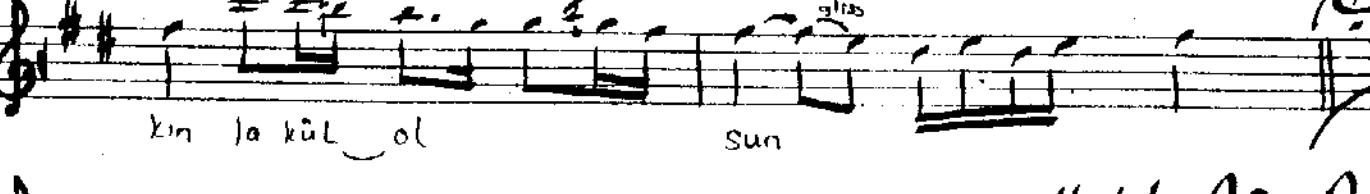
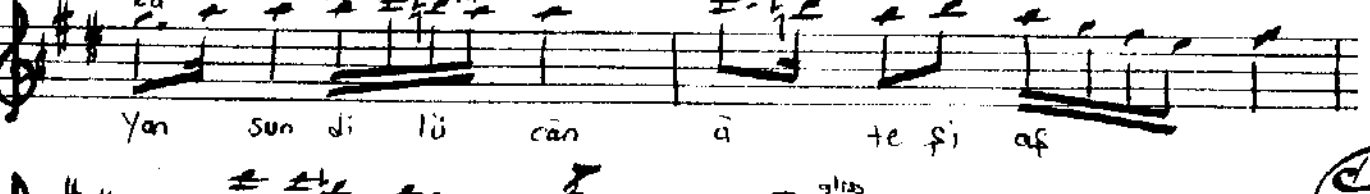
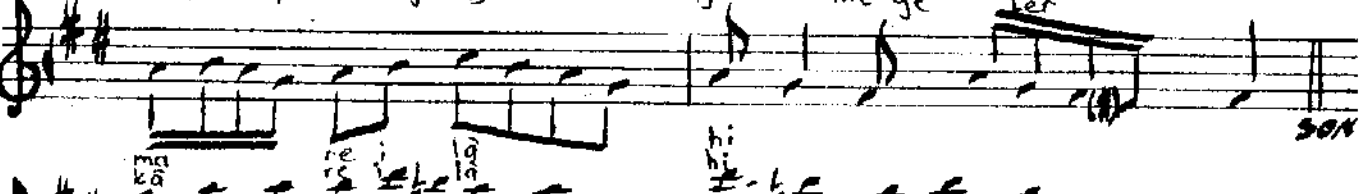
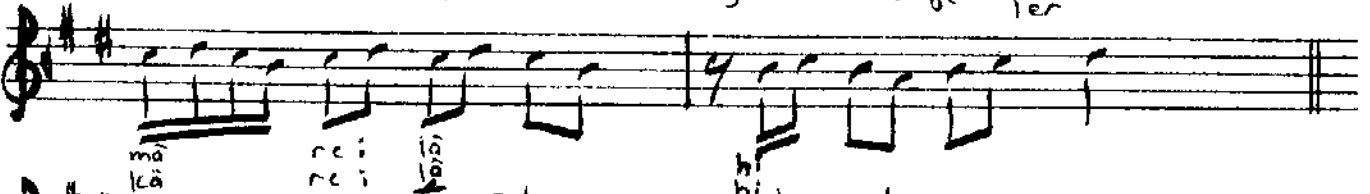
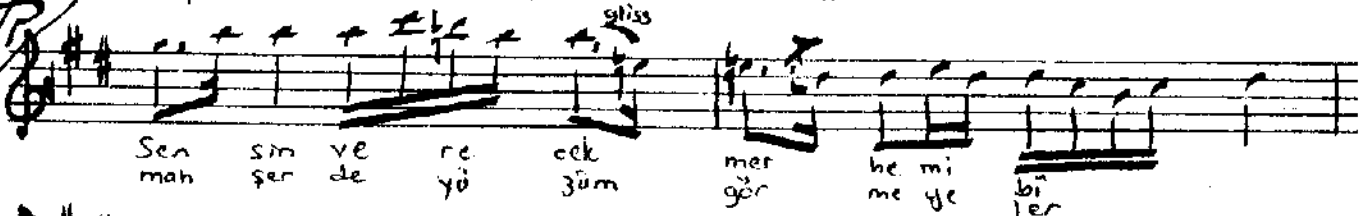
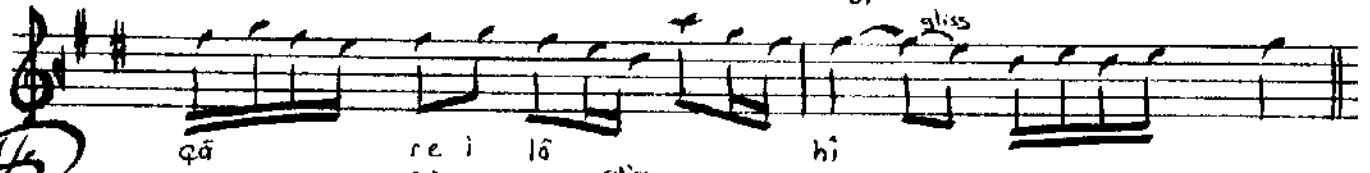


ÂVC İLÂHÎ

Beste: Hâfız Sâadet elendi
(Sülâyman) ye camîi şâhî mîrân bîrî
Gâze: Zîve pîrâ



Ol dum e le mi cür mi le bi- qâre ilâhi
Sen sin verecek merhemî bî-mâre ilâhi
Yansun dil ü cân âteş-i aşkına kül olsun
Mahşerde yüzüm görmeyeler kâre ilâhi

Al bent-i kâfî sîvâdan beni kurtar
İn vâsîl olan rûyet-i didâre ilâhi
Sen ister isen kullarını mağfiret etmek
Düzhâda döner yerleri pûl-zâre ilâhi

Mustafa Dâvâs Dikmen